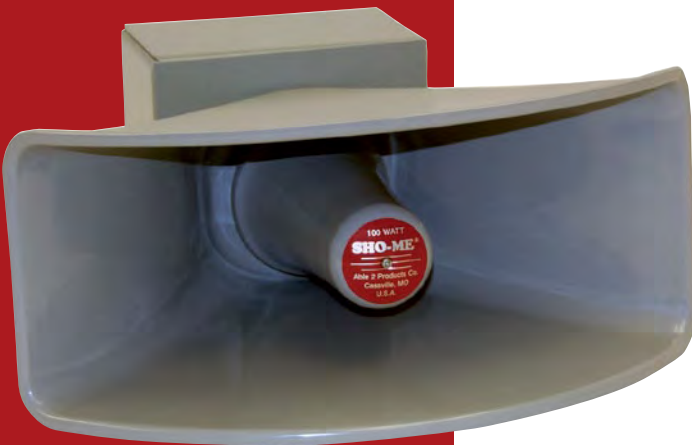


Reverse Evacuation System

The solution to one of the most vulnerable situations school campuses face each day.

Move students and staff inside quickly when dangerous situations arise.

- Severe weather emergencies
- Aggressive and/or armed person
- Law enforcement actions
- Gas leak or explosion
- Chemical spill
- Hazardous materials incident
- Aggressive animal
- Air pollution alert



Reverse Evacuation System

A Multi-Purpose System with Life-Saving Features

Model 35.1000 Series

- Reverse Evacuation mode alerts students and staff by continuously sounding a distinctive tone for 10 minutes or until manually disabled.
- Active Shooter mode recreates the wail or yelp siren sound used by police or emergency vehicles. The sound will operate for 10 minutes or until it is manually disabled.
- An internal, low-volume speaker allows the user to monitor the alarm sound from inside the building.
- A 12V DC rechargeable, lead-acid battery provides power even during a power outage. 2 Year Warranty
- Plug-in wall charger keeps unit fully charged and always ready.
- Lighted tactile switches easily activate each mode.
- Five year limited warranty on electronics.
- Made in the U.S.A.



Model 35.1000

Model 35.2000 Series

- Same features as on 35.1000 Series models above except the Reverse Evacuation mode also triggers an integrated 911 Dialer. The dialer plays your customized, pre-recorded message twice before automatically shutting off. (Dialer may be disabled for drills.)
- Silent alarm mode dials 911 only - without an audible siren sound.



Model 35.2000

Everything You Need in One R.E. System

Control Box, Loudspeaker and Speaker Wire included with all models.



- Steel Enclosed Control Box**
- Easy open latch. (Optional lock available.)
 - Hinged door with 180° swing.
 - Knock-out holes on four sides.
 - Through holes on back for wall-mounting.
 - 11½" H x 11¼" W x 3⅝" D

- 100W Loudspeaker**
- 11 ohm speaker provides louder & wider sound coverage.
 - Steel box protects driver from the weather.
 - Optional pipe stand mount.
 - Overall: 6⅞" H x 14" W x 13" D



- Premium-Rated Speaker Wire**
- 100' Standard Length
 - E247266 UL Listed Cable
 - 14 Gauge / 2 Conductor
 - 600 Volt
 - Wet and Oil Resistant
 - Optional Plenum-Rated Cable

Pick a Model to Suit Your School Setting

Available with one, two or four speakers / Optional auto-dialer



Model 35.1000

35.1000 Reverse Evacuation System
Includes (1) control box & battery charger, (1) 100' spool of speaker wire and (1) 100W loudspeaker.

35.2000 Reverse Evacuation System
Includes (1) control box with Auto Dialer & battery charger, (1) 100' spool of speaker wire and (1) 100W loudspeaker.



Model 35.2000-2

35.1000-2 Reverse Evacuation System
Includes (1) control box & battery charger, (2) 100' spools of speaker wire and (2) 100W loudspeakers.

35.2000-2 Reverse Evacuation System
Includes (1) control box with Auto Dialer & battery charger, (2) 100' spools of speaker wire and (2) 100W loudspeakers.



Features

- Unique tone for reverse evacuation.
- Additional siren tones for use in the event of an aggressive person or active shooter situation.
- Rechargeable battery functions as a backup during a power outage.
- Easy-to-operate control panel.
- Optional safe panel prevents unauthorized activation.
- External speaker(s) produces an audible alarm heard campus-wide.
- OPTIONAL: Auto Dialer to 911 with pre-recorded message advising police of the reverse evacuation situation and location. Unit has a disable switch for the Auto Dialer during emergency drills.
- Five year limited warranty on parts and labor.
- Two year warranty on the battery.
- Made in the U.S.A.

Components

- Powder-coated metal cabinet containing:
 - control panel with lighted switches
 - rechargeable battery
 - internal, low-volume speaker
 - optional auto-dialer
- Plug-in battery charger
- 100' of speaker wire
- External loudspeaker with powder-coated, metal driver housing
- Detailed installation instructions
- Voice recording instructions for optional auto dialer